



32310

Reg. No.

--	--	--	--	--	--	--	--

III Semester B.A./B.Com./B.B.A./BCA./B.Sc./BHM./BVA./Degree Examination,  
March/April - 2022

ADDITIONAL ENGLISH

Confluence - III

(CBCS Scheme Freshers & Repeaters)

Paper : III

Time : 3 Hours

Maximum Marks : 70

*Instructions to Candidates:*

1. Answer all the questions.
2. Write the question number correctly.

SECTION- A

I. Answer any Five of the following in One or Two sentences each. (5×2=10)

1. Mention the different stages through which people were separated in the poem 'let's unite'.
2. Who burnt down the schools in Swat?
3. Who does 'we' refer to in the poem "Let's Unite"?
4. What is the wreckage that the rain leaves behind in the poem 'when it rains in Dharmashala'?
5. What was the goal of Yasodhara's husband?
6. What was the question for which her mother got puzzled in the story 'The Other Side of The War : A Story'?
7. What was the nationality of the oriental couple in the story 'Wilshire bus'?

II. Answer any Three out of the following in a paragraph each. (3×5=15)

1. Describe the incident in Esther's past. Why does it disturb her greatly?
2. How did Malala express her gratitude towards her parents?
3. What factors have divided the world according to the poet in the poem 'Let's Unite'?
4. Write a note on the love and care shown by Yasodhara?
5. Comment on the nature of effect of the rain on the room with reference to 'when it rains in Dharmasala'?
6. Write short note on The Story 'The Other side of the war'?

[P.T.O.]



III. Answer any One of the following in about two pages.

(1×10=10)

1. What was the message that Malala tried to convey in her speech?
2. "I want you to know, he said, that we aren't like that man. We don't all feel the way he does". This sentiment expressed by a fellow passenger can be a way forward to fight racial discrimination. Explain.
3. How does Yashodhara express her love and resignation? Discuss.

### SECTION- B

#### (DRAMA) - CHITRA

IV. Answer any One of the following in a paragraph.

(1×5=5)

1. Write briefly about Chitra's experience in the forest.
2. Why are Chitrangada and Arjuna, an example of true love?
3. How does Chitra stand for a common woman in the play.

V. Answer any One of the following in about two pages.

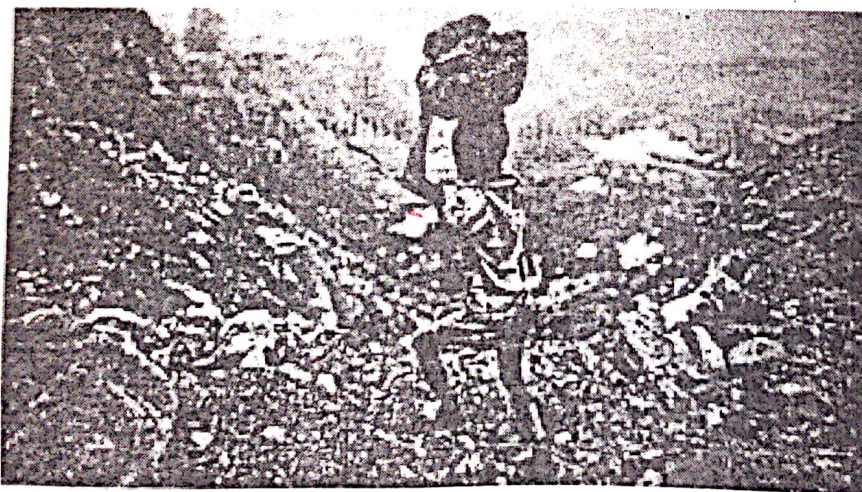
(1×10=10)

1. Tagore's Chitra can be compared to a modern women. Discuss.
2. How does Tagore present the sensible and revolutionary ideal of women in the play "Chitra"?

### SECTION- C

VI. a. Write a caption for the following picture.

(2×2.5=5)



- b. BESCOM has advertised in the Times of India newspaper asking interested candidates to volunteer for a drive to Save Electricity. Prepare two captions for it.



VII. You are starting a new computer training centre. Design a leaflet, advertising your new venture. (1×5=5)

VIII. Write instructions for any One of the following. (1×5=5)

1. Applying for a bus pass.
2. Operating a mixer grinder.
3. Planting a seed.

IX. a. Read the following paragraph and draw a diagram of your choice. (1×5=5)

Morphemes is the linguistic field of study. It is the smallest linguistic unit with a word that can carry a meaning. The study of morphemes is called as "Morphology". Every morpheme can be classified as either free or bound. The bound type is further classified as prefix which is the initial position, Infix which is middle position and suffix which is the final position. The last category of suffix has three types namely Derivational, Inflexional & bound base. The derivational category also has sub - category of class changing and class maintaing.

(OR)

b. Write a paragraph summarising the folloiwng diagram :

